

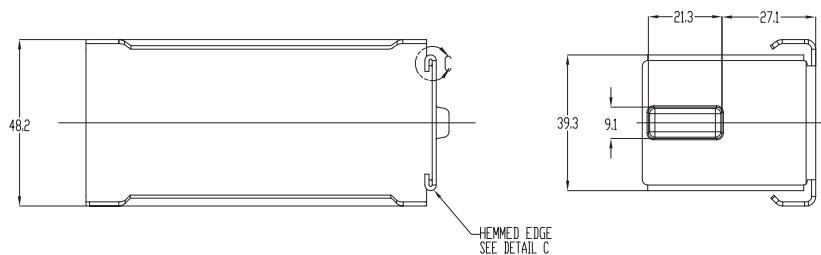
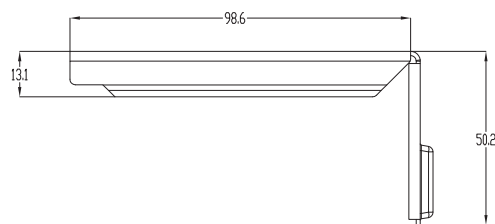
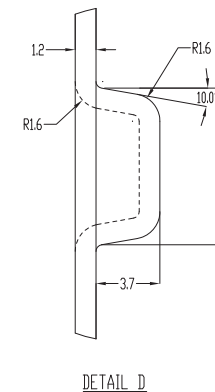
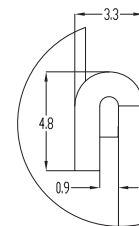
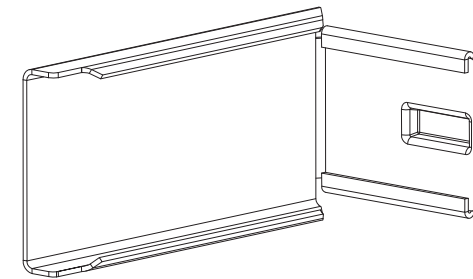
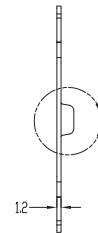
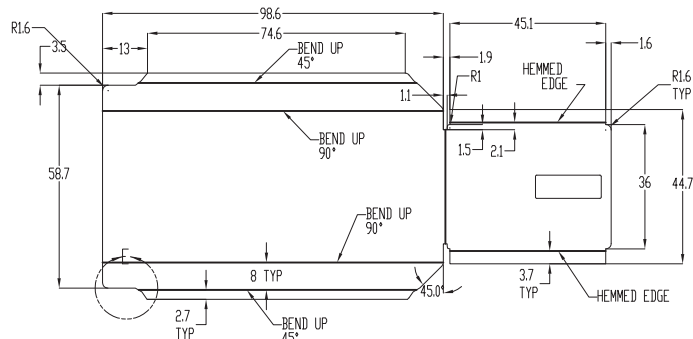
THE INFORMATION CONTAINED IN THIS DRAWING IS THE SOLE PROPERTY OF HARDWARE RESOURCES INC. ANY REPRODUCTION IN PART OR AS A WHOLE WITHOUT THE WRITTEN PERMISSION OF HARDWARE RESOURCES INC. IS PROHIBITED.

NOTES:

1. DRAWN IN ACCORDANCE WITH ASME Y14.5M
2. REMOVE ALL BURRS AND SHARP EDGES
3. ALL FILLETS AND ROUNDS R 0.05 UNLESS OTHERWISE SPECIFIED

REVISIONS

ECD	REV	DESCRIPTION	DATE	APPROVED



UNLESS OTHERWISE SPECIFIED DIM ARE IN MILLIMETERS (mm)

GENERAL TOLERANCES	
0.00 - 14.99	± 0.10
15.00 - 39.99	± 0.20
40.00 - 74.99	± 0.30
75.00 - 99.99	± 0.45
100.00 - 199.99	± 0.70
200.00 - 299.99	± 1.00
300.00 -	± 1.10
ANGLE	± 1.0°

THIRD ANGLE PROJECTION



MATERIAL	FINISH
1.2mm CRS	
DRAWN BY	DATE
Hugo Cai	05-06-14
DESIGNED BY	DATE
APPROVED BY	DATE



TITLE			
307FU3 Steel			
301FU3			
DRAWING NUMBER		REV	
		proi_re vision	
SIZE	RELEASE LEVEL		
A3	SCALE 1:1	SHEET 1 OF 1	